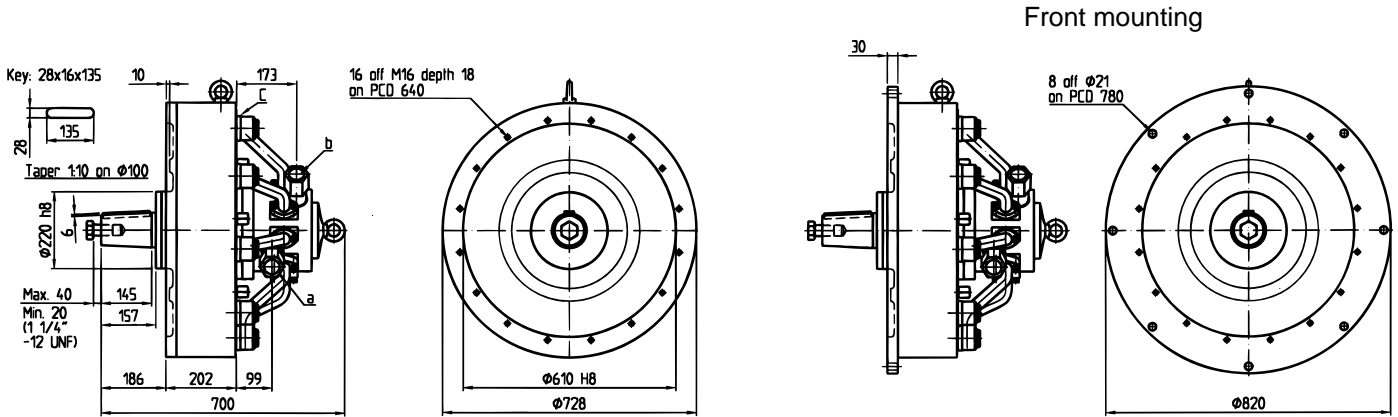
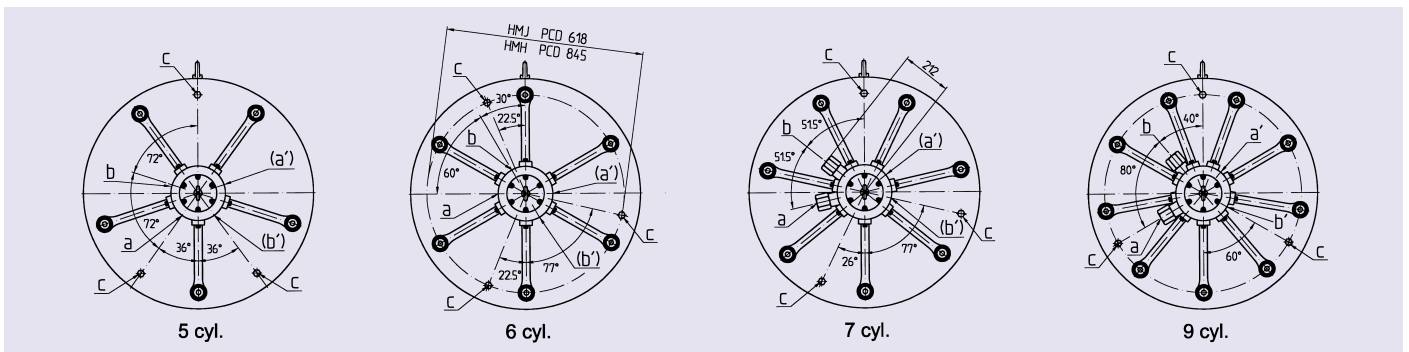
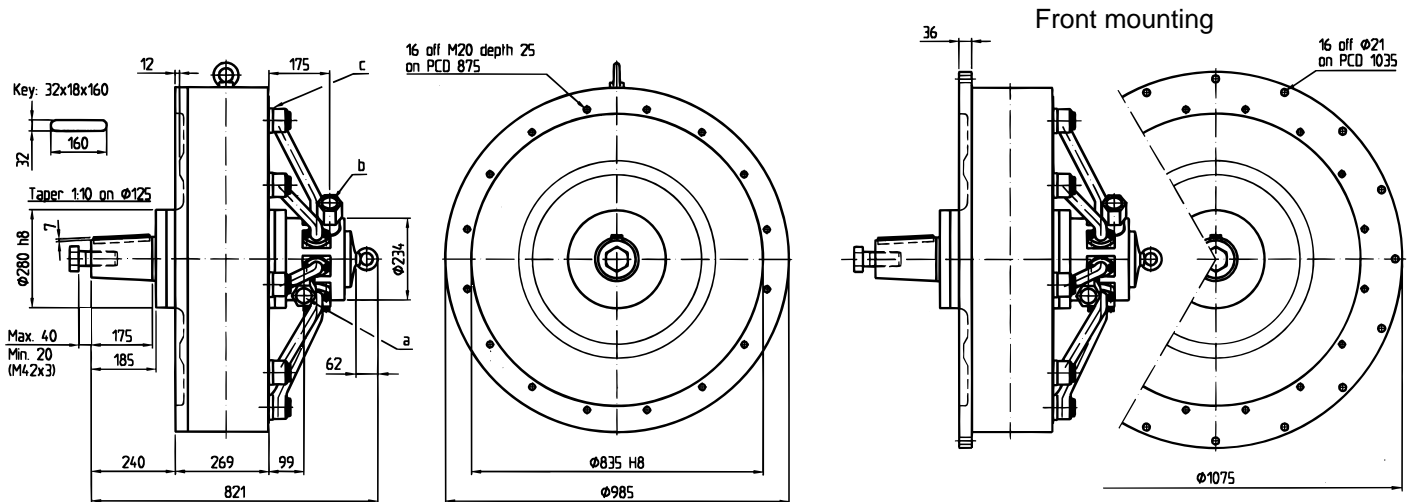


# MOTOR TYPE HMJ AND HMH – DIMENSIONS AND TECHNICAL DATA

## MOTOR TYPE HMJ9-4.7/5.9/7.2



## MOTOR TYPE HMH5-7.3 HMH7-10.2/12.7 HMH9-13.2/16.3



### OIL CONNECTION

Connections **a** and **b** on slide valve:  
1 1/2" BSP.

On 7 and 9 cylinder motors connection  
through adapters with length 95 mm.

### ROTATION

Clockwise rotation view from shaft  
end: **b**-oil inlet and **a**-oil outlet.

### DRAIN

Connection **c**: 3/4" BSP.

PCD 618 on HMJ motor

PCD 845 on HMH motor

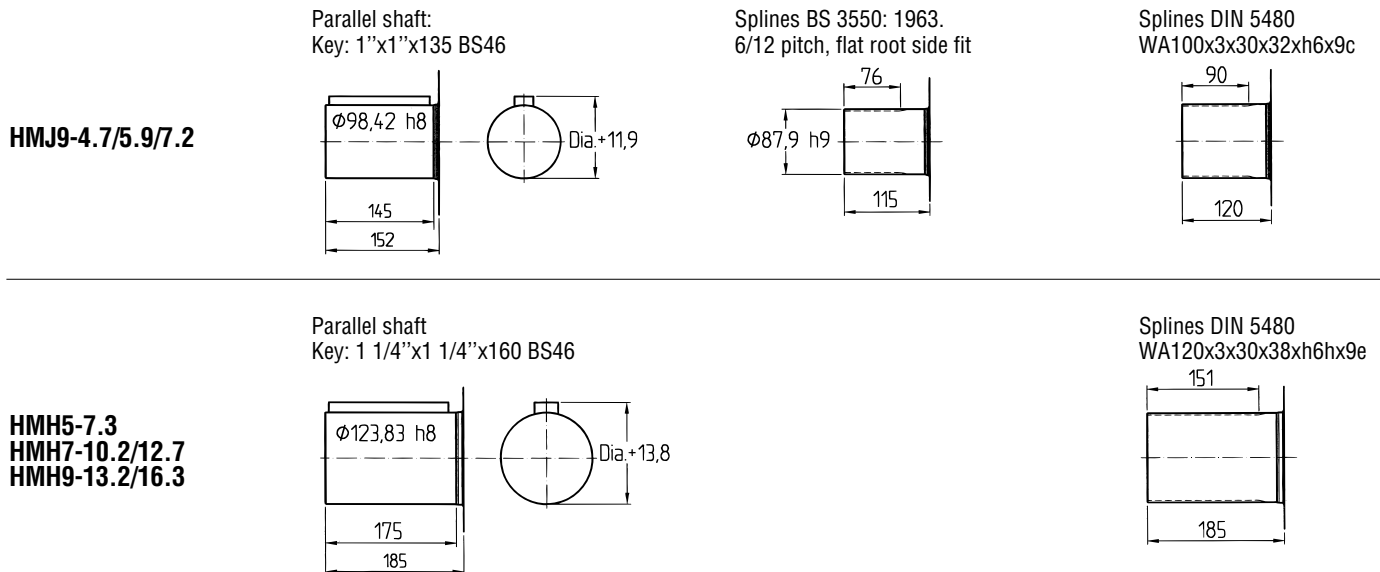
Drain always to be connected to the  
highest connection point. For special  
adapters on motors working with shaft  
upwards, consult us.

### TIGHTENING OF MOUNTING SCREWS

Tightening torque on screw M16  
(quality 8.8): 180 Nm

Tightening torque on screw M20  
(quality 8.8): 360 Nm

## ALTERNATIVE SHAFT TYPES:



## DIFFERENT MOTOR VERSIONS AND APPLICATIONS

The HMJ and HMH motors are designed for cylindrical bearings.

The 500 l/min slide valve is standard on HMJ and HMH.

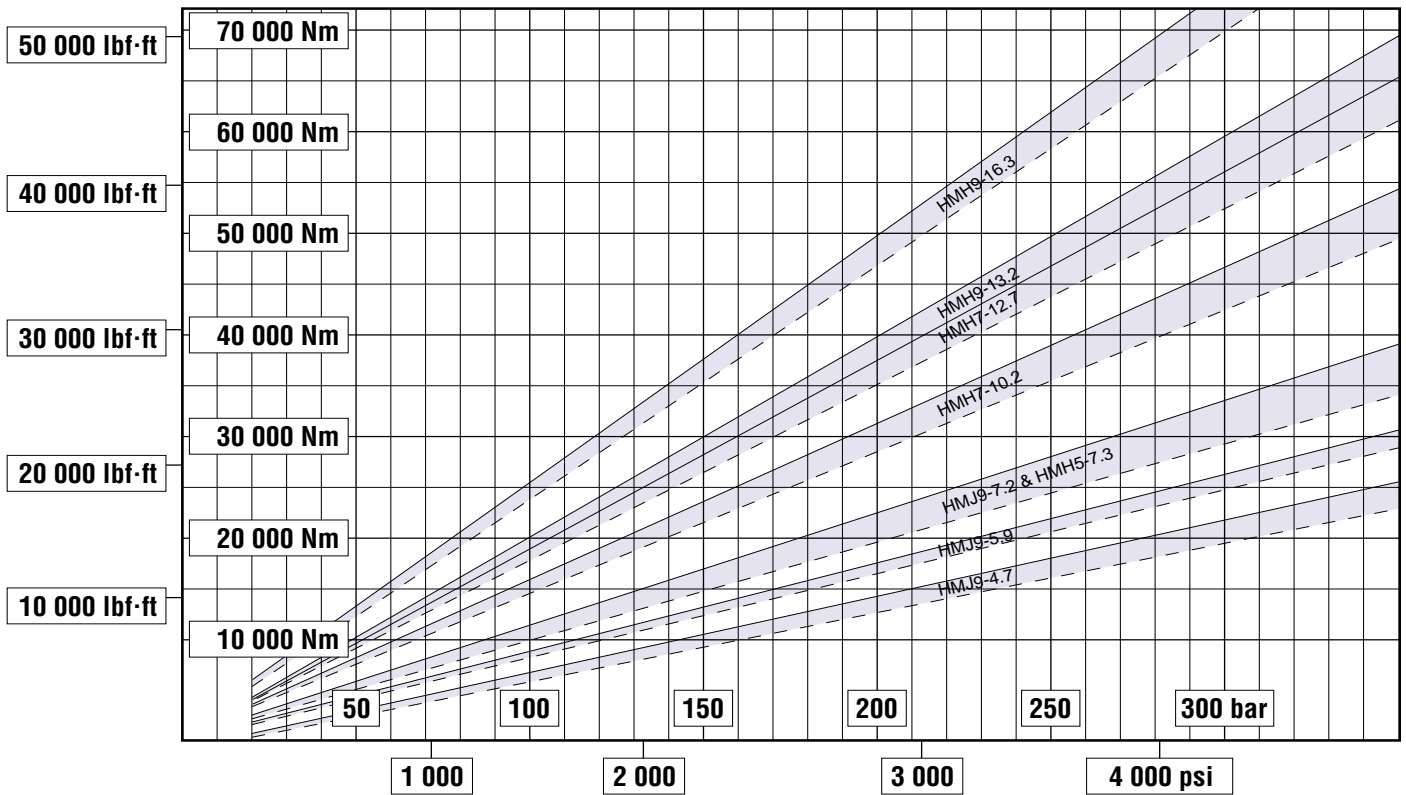
The 9 cylinder motors can also be equipped with two-speed slide valves. HMJ and HMH can also be delivered with two shaft connections (shaft on both sides). See page 17.

## TECHNICAL DATA – HJM AND HMH

	Displacement	Speed with oil delivery 600 l/min	1) Max working pressure, short duration	2) Working pressure, intermittent duty	3) Working pressure, continuous duty	4) Minimum specific starting torque	5) Specific running torque	Weight (dry) w/500 l/min. slide valve	6) Weight (dry) w/two-speed slide valve. HR12
METRIC	litre rev	rpm	bar	bar	bar	Nm bar	Nm bar	kg	kg
US	in <sup>3</sup> rev	rpm	psi	psi	psi	lbf·ft psi	lbf·ft psi	lb	lb
<b>HMJ9-4.7</b>	4,70	128	315	250	150	67,5	71,5	522	550
	287	128	4570	3630	2180	3,43	3,63	1151	1213
<b>HMJ9-5.9</b>	5,87	102	280	230	140	84,3	89,2	545	573
	359	102	4060	3340	2030	4,29	4,54	1202	1263
<b>HMJ9-7.2</b>	7,17	84	280	200	120	103,0	109,0	552	580
	438	84	4060	2900	1740	5,23	5,52	1217	1279
<b>HMH5-7.3</b>	7,30	82	315	250	200	98,9	110,4	885	N/A
	446	82	4570	3630	2900	5,02	5,61	1951	N/A
<b>HMH7-10.2</b>	10,22	59	315	250	180	141,2	154,2	945	N/A
	624	59	4570	3630	2610	7,18	7,84	2083	N/A
<b>HMH7-12.7</b>	12,72	47	280	230	140	175,7	191,8	953	N/A
	777	47	4060	3340	2030	8,93	9,75	2101	N/A
<b>HMH9-13.2</b>	13,14	46	280	250	160	189,1	199,6	1005	1033
	802	46	4060	3630	2330	9,62	10,15	2216	2377
<b>HMH9-16.3</b>	16,35	37	280	210	130	233,5	246,5	1015	1043
	998	37	4060	3050	1890	11,87	12,54	2238	2299

- 1) For working periods of short duration and intermittent duty e.g. maneuvering of ship's hatches and capstans. Test pressure is 375 bar. Peak (shock) pressure up to 375 bar is allowed.
- 2) Recommended oil pressure for excavators, winches and normal transport equipment, and various applications for intermittent duty.
- 3) Service life for the motors can be calculated with the lifetime formula page 20.
- 4) See diagrams and information page 19.
- 5) 95% efficient.
- 6) Add 40 kg (88 lb) for two-speed slide valve HR12.

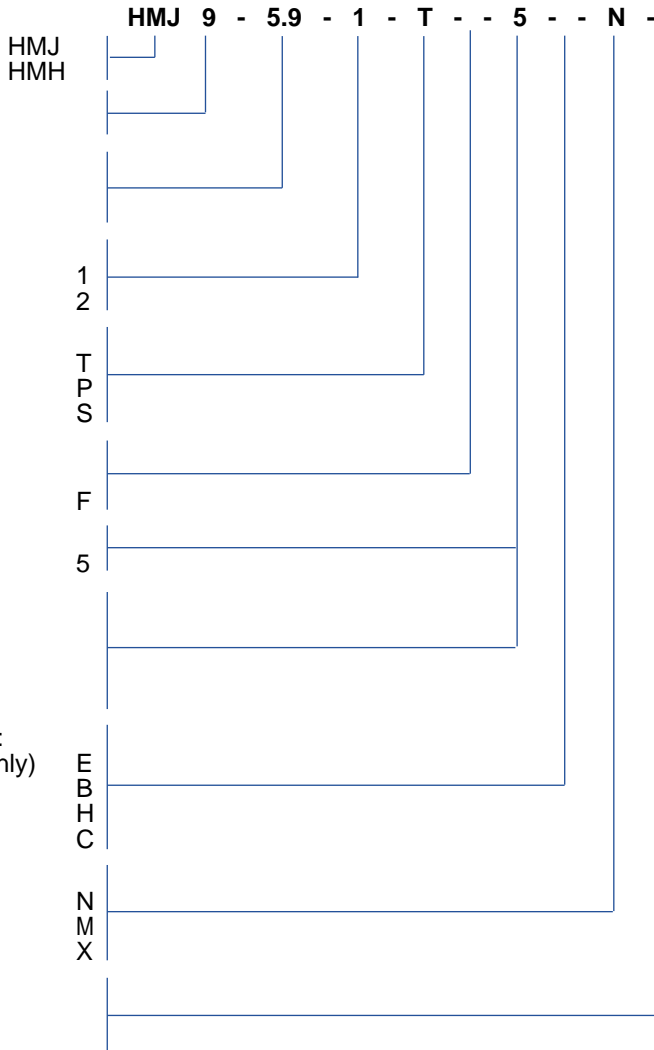
## TORQUE – PRESSURE DIAGRAM



## ORDERING CODE FOR MOTOR TYPE HMJ AND HMH

Example:

Motor type:



### Reference to old and new designation.

Old designation	New designation
HMJ9-8592	HMJ9-4.7
HMJ8-9592	HMJ8-5.2
HMJ9-9592	HMJ9-5.9
HMH5-130110	HMH5-7.3
HMH7-130110	HMH5-10.2
HMH9-130110	HMH9-13.2
HMH9-145110	HMH9-16.3