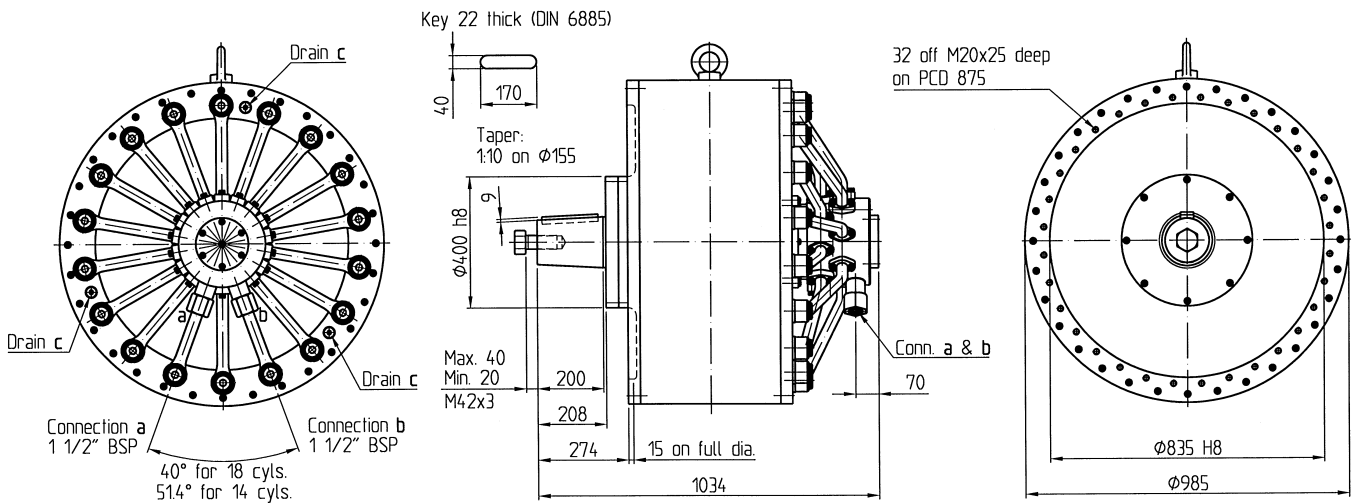


# MOTOR TYPE HMK – DIMENSIONS AND TECHNICAL DATA

## MOTOR TYPE HMK14-20.4 HMK18-26.4/32.6



### OIL CONNECTION

Connections **a** and **b** on slide valve:  
1 1/2" BSP.  
Connection through adapters with  
length 95 mm.

### DRAIN

Connection **c**: 3/4" BSP on PCD 845.  
Drain always to be connected to the  
highest connection point. For special  
adapters on motors working with shaft  
pointing upwards, please consult us.

### ROTATION

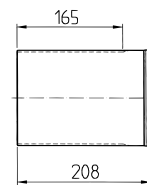
Clockwise rotation view from shaft end:  
Oil inlet: connection **b**  
Oil outlet: connection **a**

### TIGHTENING OF MOUNTING SCREWS

Tightening torque on screw M20  
(quality 8.8): 360 Nm

### ALTERNATIVE SHAFT TYPES:

Splines:  
WA150x3x30x48xh6x9e DIN 5480



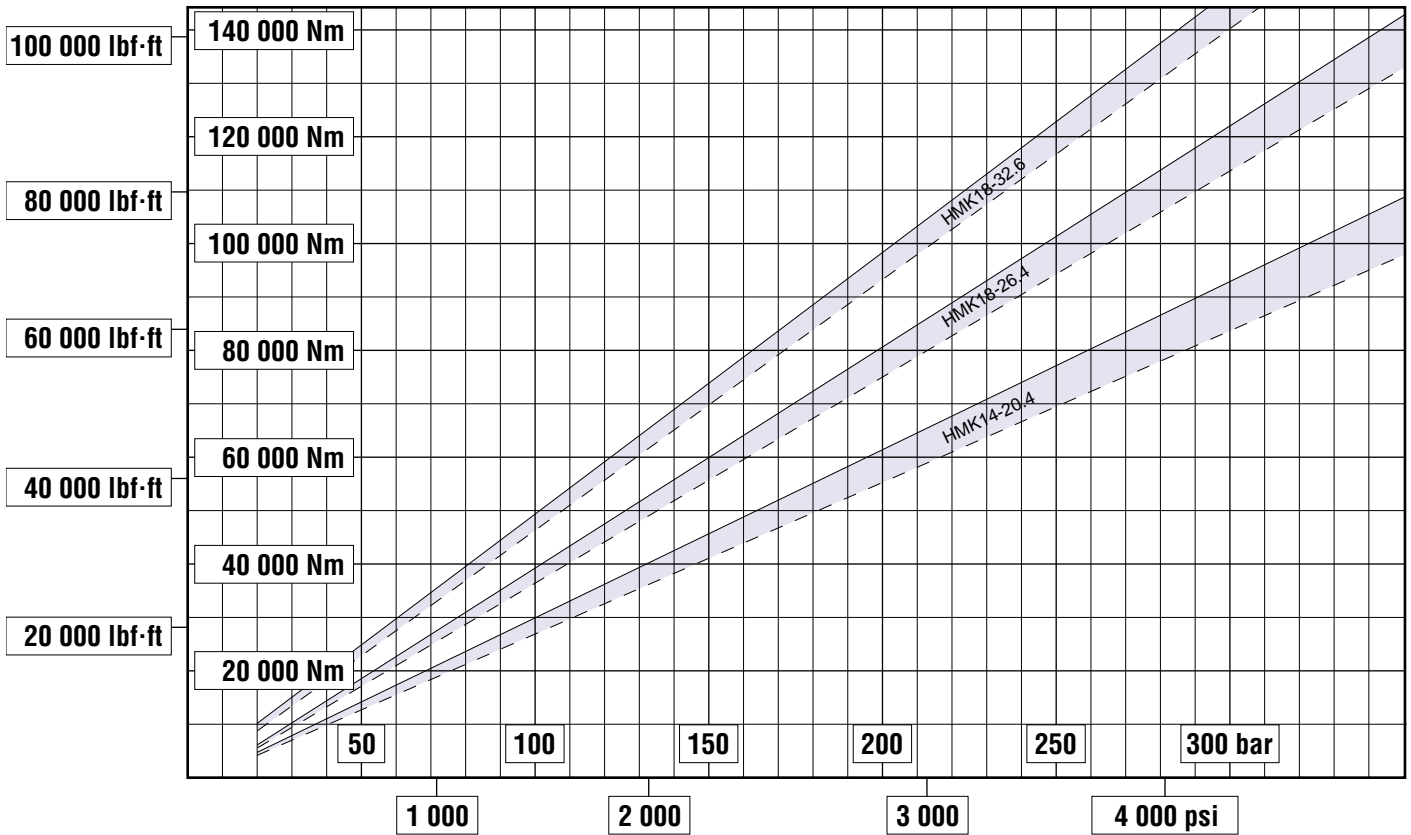
Parallel shaft on request.

## MOTOR TYPE: HMK14-20.4 HMK18-26.4/32.6

	Displacement	Speed with oil delivery 1000 l/min	1) Max working pressure, short duration	2) Working pressure, inter- mittent duty	3) Working pressure, con- tinuous duty	Minimum specific starting torque	4) Specific running torque	Weight (dry) w/1000 l/min slide valve	Weight (dry) w/two-speed slide valve HR22
<b>METRIC</b>	litre rev	rpm	bar	bar	bar	Nm bar	Nm bar	kg	kg
<b>US</b>	in <sup>3</sup> rev	rpm	psi	psi	psi	lbf·ft psi	lbf·ft psi	lb	lb
<b>HMK14-20.4</b>	20,4	49	315	250	180	282,4	308,4	1770	1880
	1248	49	4570	3630	2610	14,36	15,68	3902	4145
<b>HMK18-26.4</b>	26,4	38	280	250	160	378,2	398,2	1880	1990
	1604	38	4060	3630	2320	19,24	20,25	4145	4387
<b>HMK18-32.6</b>	32,6	31	280	210	130	467,0	493,0	1910	2020
	1996	31	4060	3050	1890	23,74	25,08	4211	4453

- 1) For working periods of short duration e.g. manouering of ship's hatches and capstans. Test pressure is 375 bar. Peak (shock) pressure up to 375 bar is allowed.
- 2) Recommended oil pressure for excavators, winches and normal transport equipment, and various applications for intermittent duty.
- 3) Service life for the motors can be calculated with the lifetime formula page 20.
- 4) 95% efficient.

## TORQUE – PRESSURE DIAGRAM



## ORDERING CODE – HMK

Example:

No. of cylinders:  
14-18

Displacement (l/rev):  
20.4-32.6

Shaft type:

Taper  
Parallel  
Spline

Slide valve HR20  
(one speed):  
1000 l/min

Slide valve HR22  
(two-speed):  
Speed ratios 18/9,  
18/0, 14/7, 14/0

Please contact us for  
other speed ratios.

Shaft seals:

Single acting, nutring  
High speed seal  
Special arrangements

Other details:  
(special hydr. fluids  
valves, etc.)

**HMK 18 - 32.6 - T - 10 - N -**

