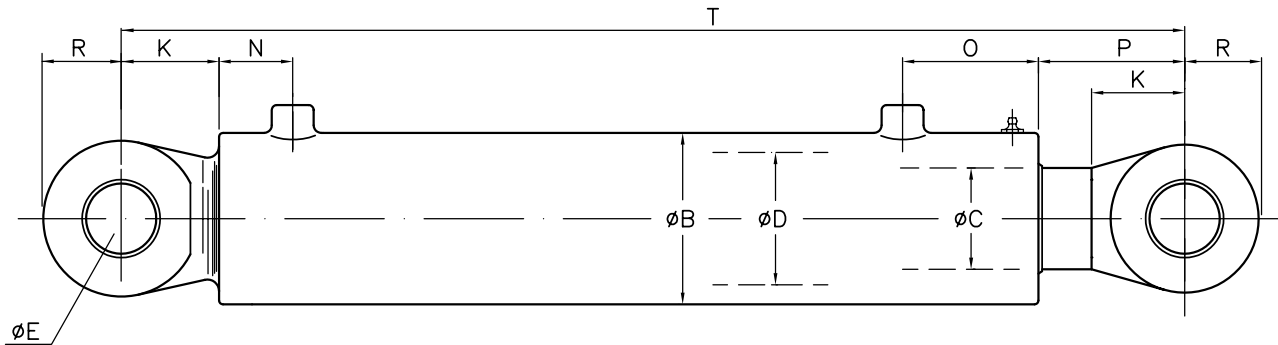


DOUBLE ACTING CYLINDERS ABOVE 300 BORE

Design pressure: 250 bar



DIAMETER OF PISTON RODS

AVAILABLE

320/220
/250
/280350/250
/280
/300400/280
/300
/320400/280
/300
/320460/300
/320
/350

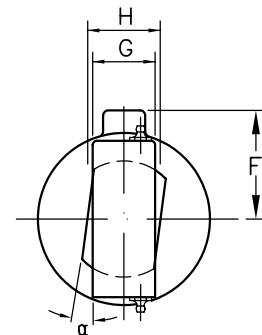
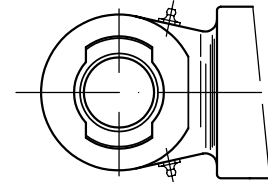
520/330

STANDARD DESIGN

- type of port (flange/ threaded), grease nipples to customers requirements
- diameter of rod might be increased for larger strokes due to buckling
- special equipment as fork ends, trunnion, cushioning, etc. available on request
- any special requirements, please ask for dimensional drawings.

materials:

- cylinder tube: St.52./3 N
- piston rod: St.52.3 N plated with 80my Cr
- spherical bearing: composite or bronze



CYL.TYPE	D	C	B	E	F	G	H	K	N	O	P	R	T	α_{max}	Pressure force 250 bar
Double Acting	320	220	394	160	242	140	150	200	105	235	215	170	935	3.2°	2010 kN
	350	250	419	180	255	140	160	210	115	290	225	180	1015	5.1°	2405 kN
	400	280	470	200	280	160	180	240	130	290	260	225	1150	4.6°	3141 kN
	460	300	546	220	318	180	200	275	145	300	295	260	1275	4.4°	4155 kN
	520	330	610	240	350	200	220	310	160	300	330	280	1360		5309 kN

Other dimensions available on request

BAUER hydraulics

We reserve the right to change specifications without notice.

BRØDR. BAUER-NILSEN A.S., BOX 100, N-5501 HAUGESUND, NORWAY. TLF.: +47 52 70 77 70 FAX: +47 52 70 77 99