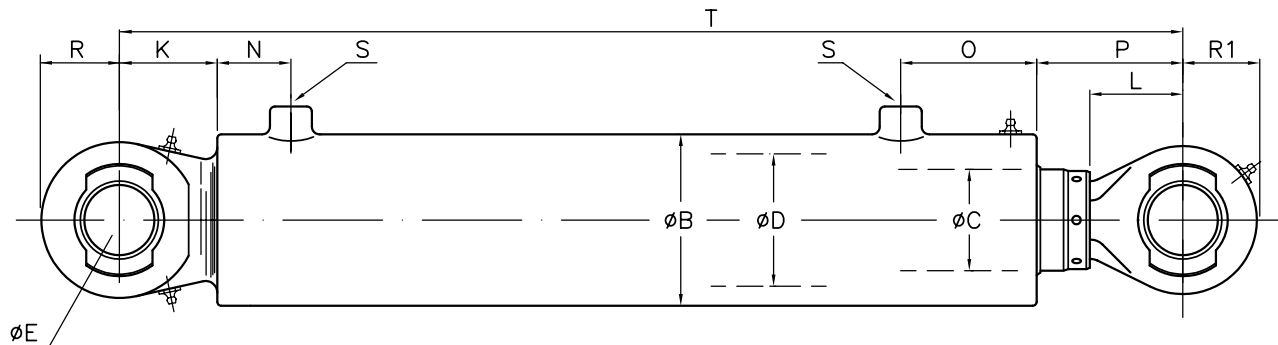
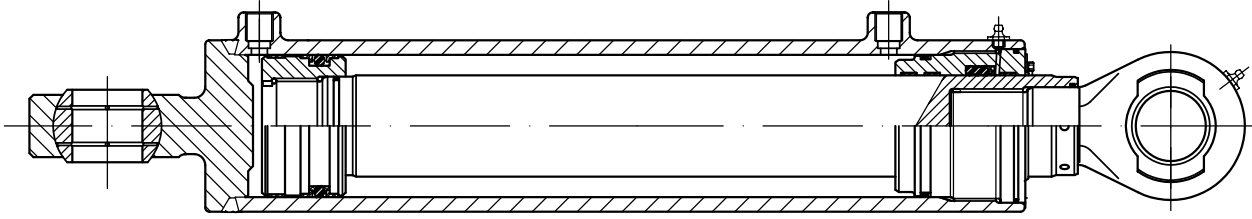


STANDARD CYLINDERS – SERIE HS1250

Design pressure: 250 bar



STANDARD DESIGN

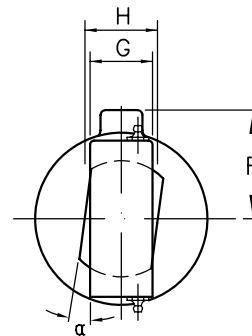
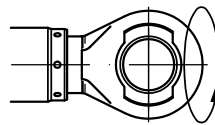
– adjustable rod end eye increases C/C min. by max. 20mm

– ports: BSP-threads – drilled for nozzle.
– grease nipples: M10x1.0

materials:

– cylinder tube: St.52.3 N
– piston rod: St.52.3 N plated with 80my Cr
– spherical bearing: bronze

– rod material, type of port (flange/ threaded), grease nipples to customers requirements
– diameter of rod might be increased for larger strokes due to buckling
– special equipment as fork ends, trunnion, cushioning, etc. available on request
– any special requirements, please ask for dimensional drawings.



CYL.TYPE	D	C	B	E	F	G	H	K	L	N	O	P	R	R1	S	T	α_{max}	Mass T+ /100mm str.
HS 1250	100	65	127	50	88	45	50	75	70	44	110	90	58	58	1/2"BSP	390	11.3°	31.1+6.4
HS 1251 ¹⁾	120	80	152	60	101	55	60	80	77	50	115	102	68	68	1/2"BSP	420	10.5°	46+8.6
HS 1252	140	90	168	70	109	60	65	90	83	52	132	108	75	73	1/2"BSP	458	8.7°	65+10.3
HS 1253	160	100	194	80	122	64	70	100	98	65	140	123	83	83	1/2"BSP	500	7.7°	93+13.6
HS 1254	180	110	219	90	138	72	80	110	105	68	148	130	95	93	3/4"BSP	550	8.7°	125+17.1
HS 1255	200	125	245	100	151	80	90	120	118	74	158	148	105	105	3/4"BSP	590	9.5°	179+21.7
HS 1256	225	140	267	110	162	95	100	135	132	77	179	162	120	115	3/4"BSP	650	7.0°	235+24.8
HS 1257	250	160	299	125	180	95	100	146	140	82	184	170	130	125	3/4"BSP	700	6.2°	295+32.3
HS 1258	280	180	324	140	192	115	120	165	160	95	214	195	150	143	1"BSP	800	7.5°	396+36.4
HS 1259	300	200	356	150	208	130	135	180	175	101	220	210	155	153	1"BSP	836	6.1°	492+47.3

1) Also available as HS 1241, cylinder bore Ø125. External dimensions identical.