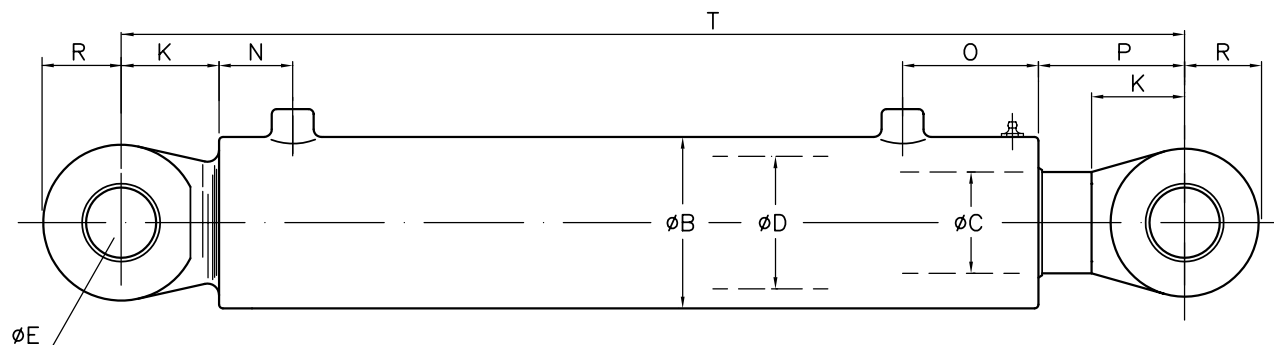


## STANDARD CYLINDERS – SERIE HS1570

Design pressure: 250 bar



## DIAMETER OF PISTON RODS AVAILABLE

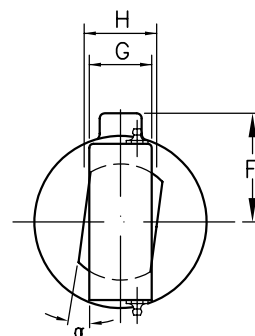
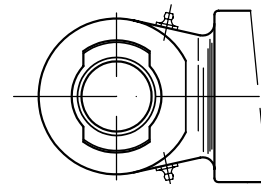
CYLINDER TYPE			
HS 1570	100/ 70	HS 1576	225/140 /160 /180
HS 1571	120/ 90		
HS 1572	140/ 90 /100 /110	HS 1577	250/160 /180 /200
HS 1573	160/100 /115 /125	HS 1578	280/180 /200 /220 /240
HS 1574	180/110 /125 /140	HS 1579	300/200 /220 /240 /250
HS 1575	200/125 /140 /160		

## STANDARD DESIGN

- type of port (flange/ threaded), grease nipples to customers requirements
- diameter of rod might be increased for larger strokes due to buckling
- special equipment as fork ends, trunnion, cushioning, etc. available on request
- any special requirements, please ask for dimensional drawings.

## materials:

- cylinder tube: St.52./3 N
- piston rod: St.52.3 N plated with 80my Cr
- spherical bearing: composite or bronze



CYL. TYPE	D	C	B	E	F	G	H	K	N	O	P	R	T	$\alpha_{max}$	Pressure force 250 bar	Mass T+ /100mm str.
HS 1570	100	70	125	50	101	45	50	75	44	110	85	58	400	11.3°	196 kN	31.1+6.4
HS 1571	120	90	150	60	113	55	60	80	50	115	90	68	423	10.5°	307 kN	46+8.6
HS 1572	140	100	165	70	109	60	65	90	52	132	100	75	462	8.7°	385 kN	65+10.3
HS 1573	160	115	190	80	134	60	70	100	65	140	110	85	497	7.7°	503 kN	93+13.6
HS 1574	180	125	210	90	146	70	80	110	68	148	120	95	550	8.7°	636 kN	125+17.1
HS 1575	200	140	244	100	159	80	90	120	74	158	130	105	597	9.5°	785 kN	179+21.7
HS 1576	225	160	267	110	171	90	100	135	77	179	145	120	658	7.0°	9940 kN	235+24.8
HS 1577	250	180	299	125	186	95	100	146	82	184	156	130	698	6.2°	1227 kN	295+32.3
HS 1578	280	200	343	140	209	110	120	165	95	220	175	150	790	7.5°	1539 kN	396+36.4
HS 1579	300	220	356	150	215	125	135	180	101	220	190	155	850	6.1°	1767 kN	492+47.3

HS 1541 = ø125

**BAUER** hydraulics

We reserve the right to change specifications without notice.

BRØDR. BAUER-NILSEN A.S., BOX 100, N-5501 HAUGESUND, NORWAY. TLF.: +47 52 70 77 70 FAX: +47 52 70 77 99